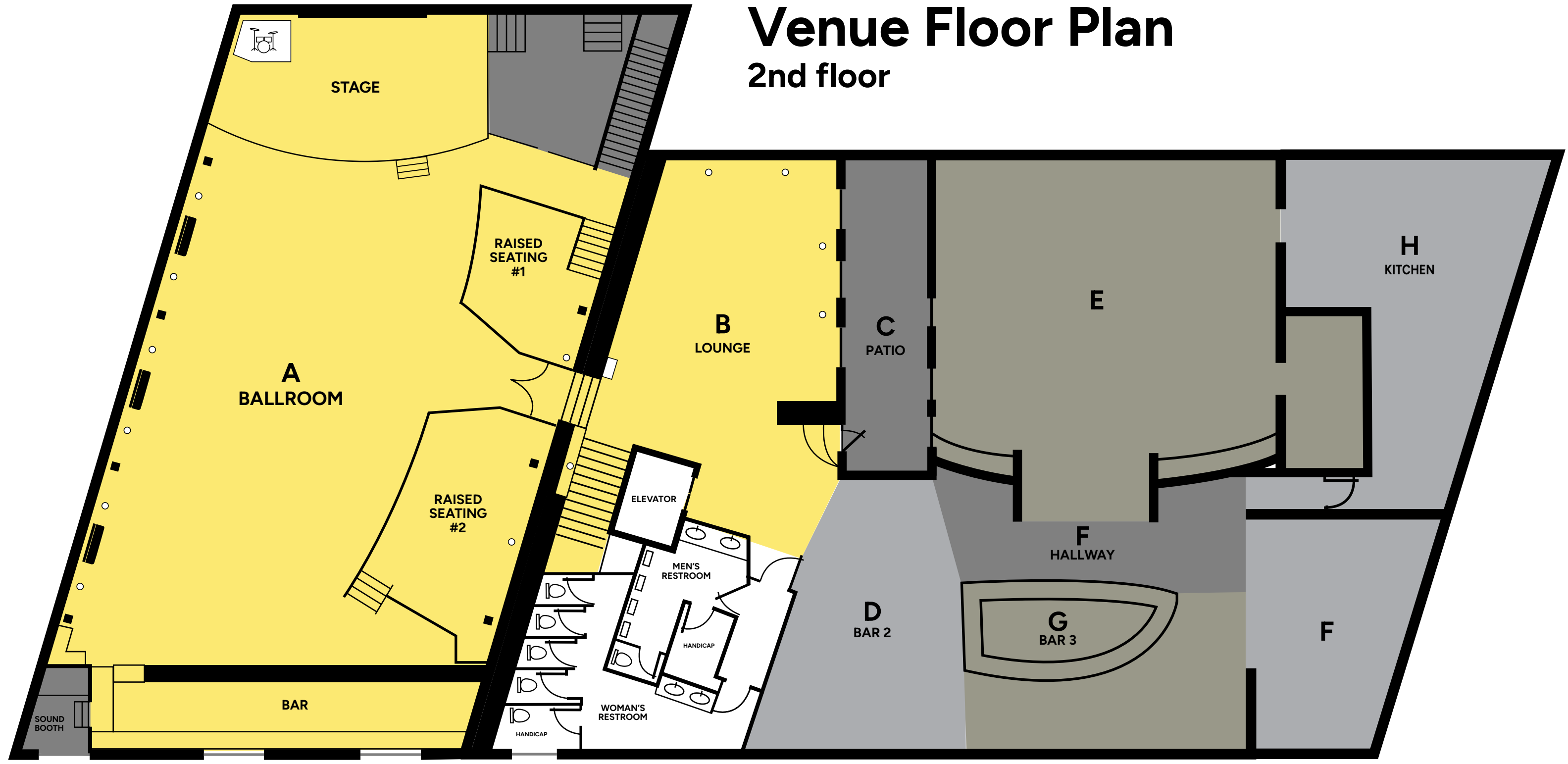


# Venue Floor Plan

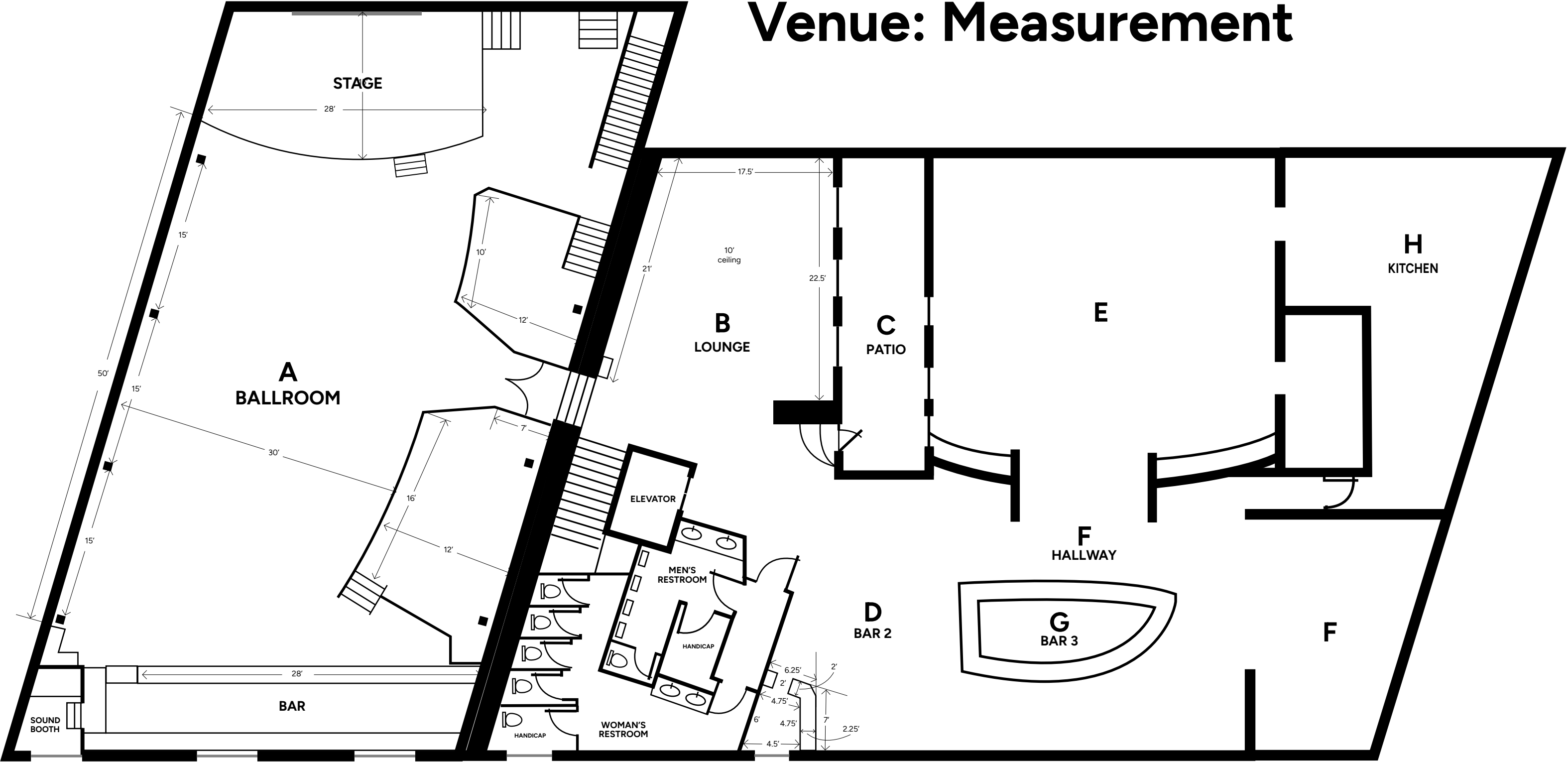
## 2nd floor



- Yellow area available
- Gray area unavailable (Request quote for rent)
- Wall Uplights (not movable)
- Drums & Cage (Request quote for removal)
- Black Wall Lounge couches
- Internet/Cabinet (not movable)

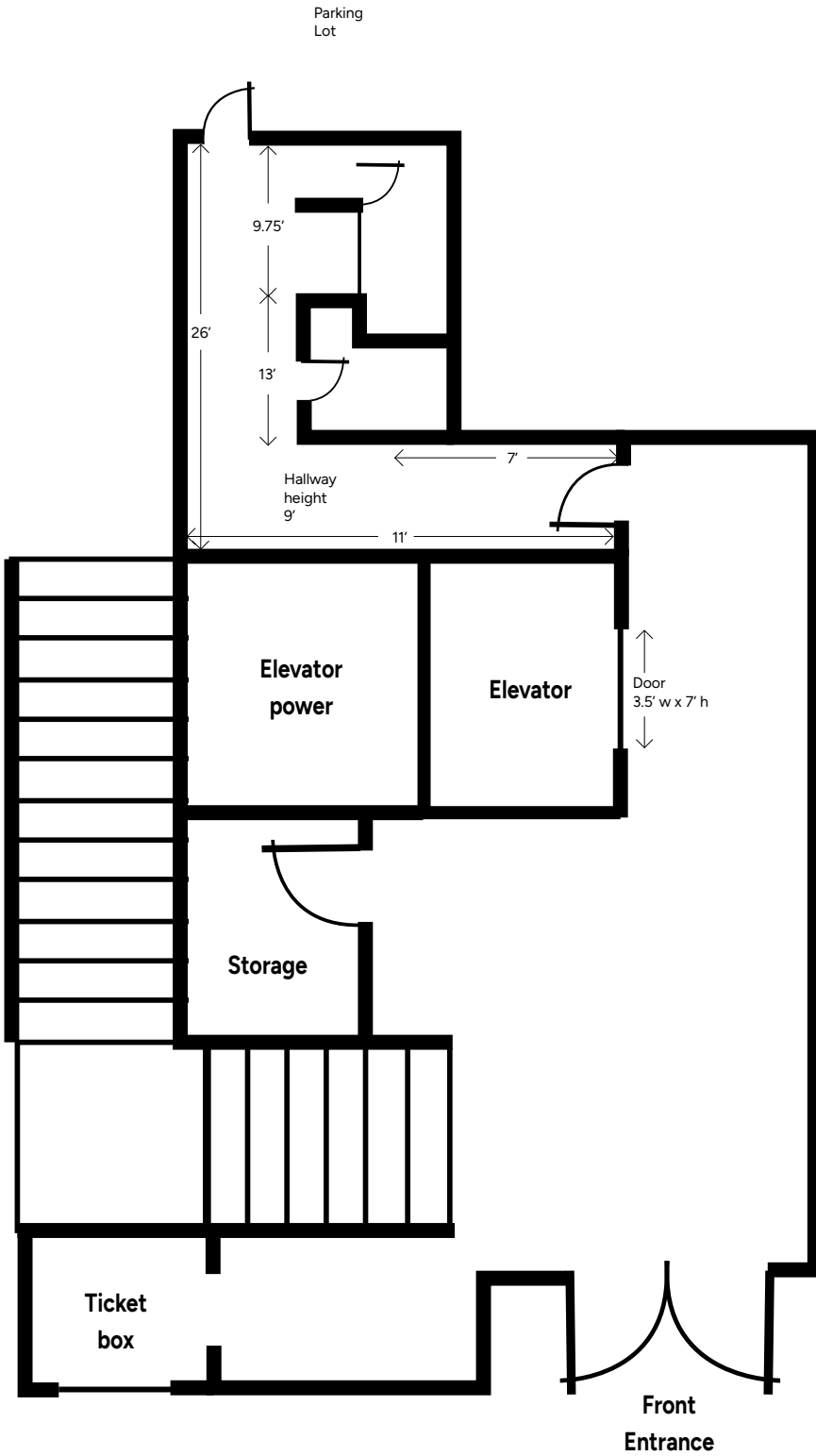


# Venue: Measurement



# Downstairs

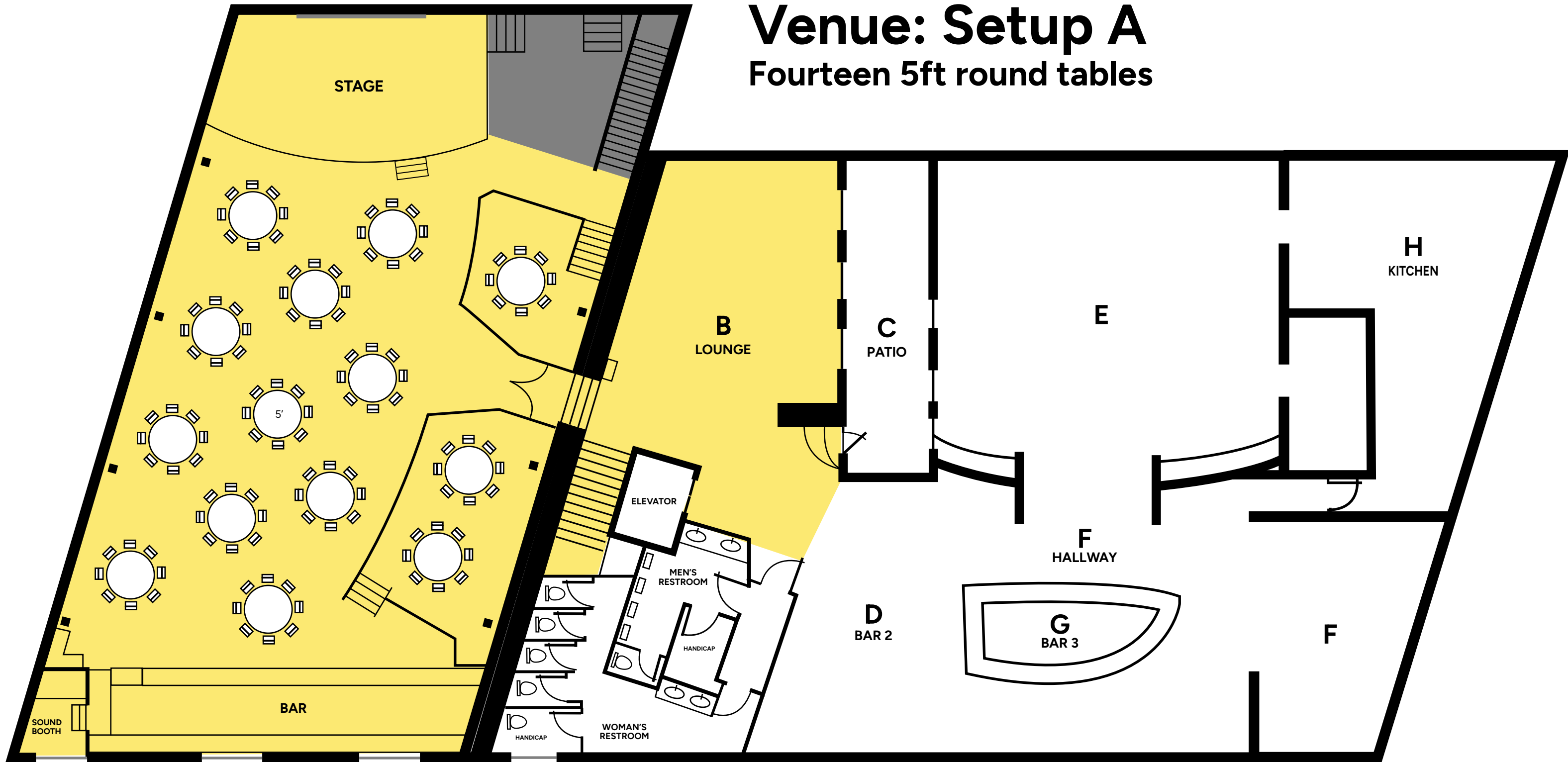
## Elevator/Hallway





# Venue: Setup A

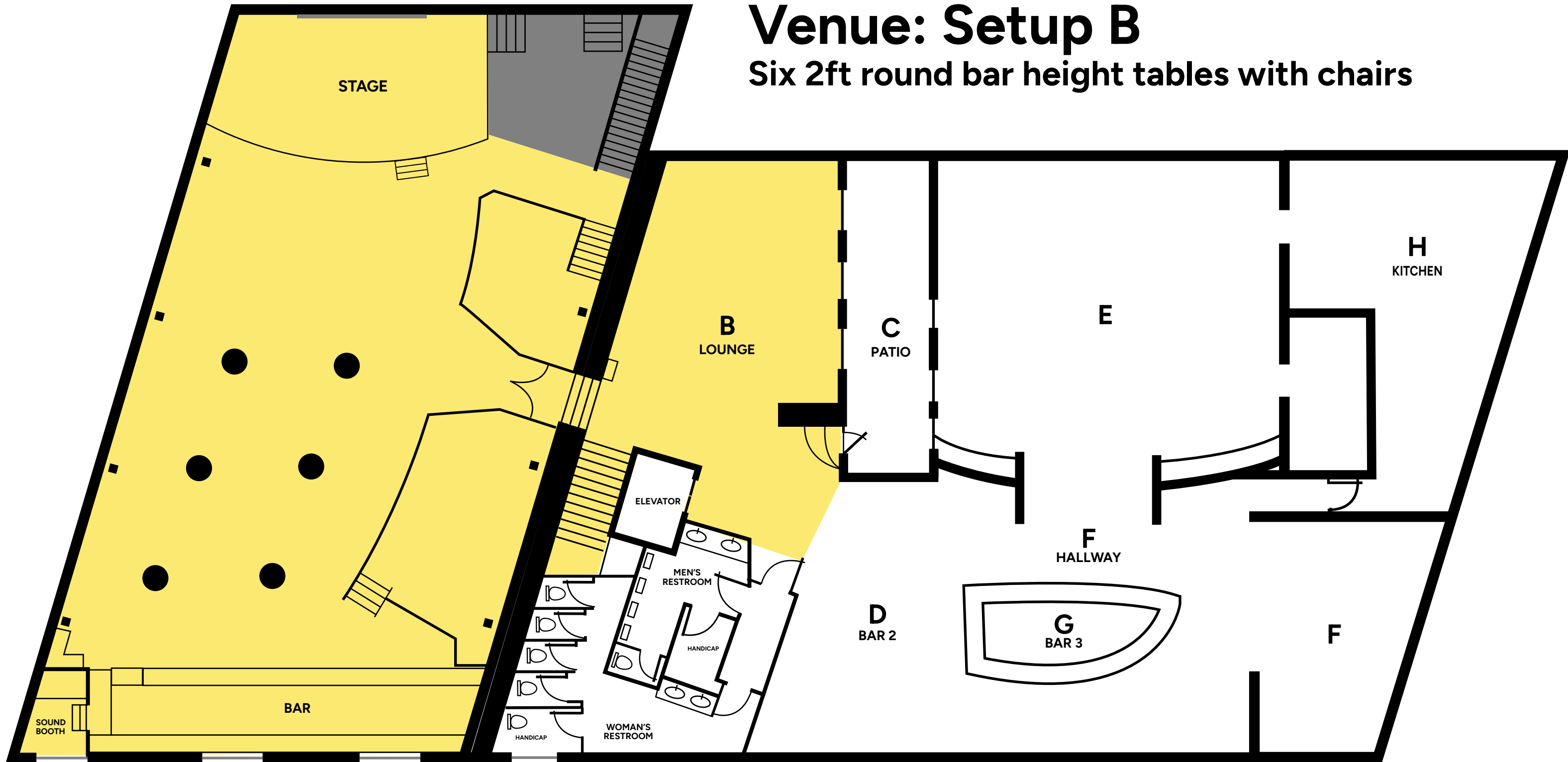
Fourteen 5ft round tables





# Venue: Setup B

Six 2ft round bar height tables with chairs







# Venue: Setup C

145 White plastic folding chairs

